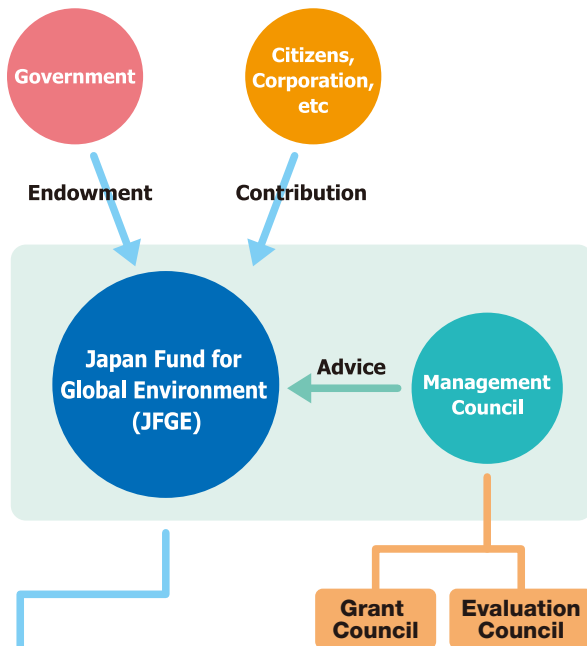


## Outlines

The JFGE was established in 1993, responding to the Statement of the Rio Declarations on Environment and Development (1992) after the emergence of global environmental issues since mid-1980s.

The interest accrued from these funds is then used to provide support for NGOs and NPOs programs aimed at conservation of the global environment.

## Image



### Grant Program

Environmental Conservation Activities by;

- Japanese private organizations in developing areas
- Foreign private organizations in developing areas
- Japanese private organizations in Japan

### Support Program

Promotion of Environmental Conservation Activities

- research
- training programs
- information



**Environmental Restoration and Conservation Agency (ERCA)**



**Department of the Japan Fund for Global Environment (JFGE)**

### Address:

Muza Kawasaki Central Tower 8th floor, 1310 Omiya-cho, Saiwai-ku, Kawasaki City, Kanagawa 212-8554, Japan

Tel: Publications & Fund Management +81-44-520-9606

Grant Program +81-44-520-9505

NGO Support Program +81-44-520-9505

Website: <https://www.erca.go.jp/jfge/english/>

E-mail: [jfge@erca.go.jp](mailto:jfge@erca.go.jp)



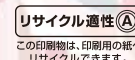
**独立行政法人環境再生保全機構**  
Environmental Restoration and Conservation Agency

The ERCA is the government-affiliated organization of the Ministry of the Environment of Japan.



# Japan Fund for Global Environment (JFGE)

The JFGE is raised by a domestic endowment from the Japanese government and donations by citizens. JFGE is providing support for NGOs and NPOs activities aimed at environmental conservation inside/outside Japan.



この印刷物は、印刷用の紙へリサイクルできます。

2021-4①

# Grant Program

The JFGE provides financial assistance to NGOs and NPOs in Japan and developing countries for projects in following areas.

- Nature protection, conservation and restoration
- Forest conservation and tree/grass planting
- Anti-desertification
- Agriculture of environmental conservation type
- Mitigation and adaptation to climate change
- Building of a recycle-oriented society
- Air, water and soil conservation
- Comprehensive environmental education
- Comprehensive environmental conservation activities
- Restoration activities
- Other environmental conservation activities

# Support Program

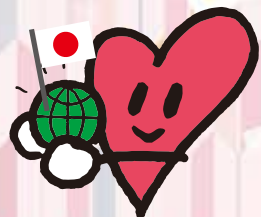
## ▣ Research

## ▣ Training programs

- (1) Training Course in Japan
- (2) Training Course out of Japan

## ▣ Information

Note: At present, these 3 programs are for the people living in Japan and are available in only Japanese.



## Notice

Non-Japanese organizations **must have a contract with an agent** (individual or organization) for applying for JFGE Grants.

### Criteria of the Agent

The Agent must meet a criterion or both criteria below;

- 1) A person who has Japanese citizenship or foreigner who has permanent residence permit of Japan, possessing a bank account available for JPY (he/she does not necessarily live in Japan, but he/she must participate into the meeting with JFGE at the headquarter of ERCA)
- 2) An organization with a main office in Japan



African Marine Mammal Conservation Organization

Educational and enlightenment activities for coexistence with endangered African manatees in Cameroon



MORIBIO, the laboratory of living in forest

Management of the Forest Living School



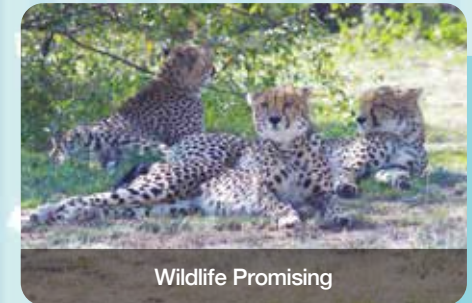
Ramsar Network Japan

Accelerating Rice Paddy Biodiversity Enhancing Decade Project



Bangladesh POUSH

Community-based harvest management by conserving the juveniles of marine biodiversity in Teknaf, Bangladesh



Wildlife Promising

Wildlife Conservation and Coexistence with Wildlife and People in Kenya



NO Black-Bass Network

Platform developing project for conservation of aquatic life

In both above cases, it is necessary that the agent is;

- A) Having the participative experience to the conservation activities implemented by the foreign applicant organizations
- B) Able to communicate with the foreign applicant organization